

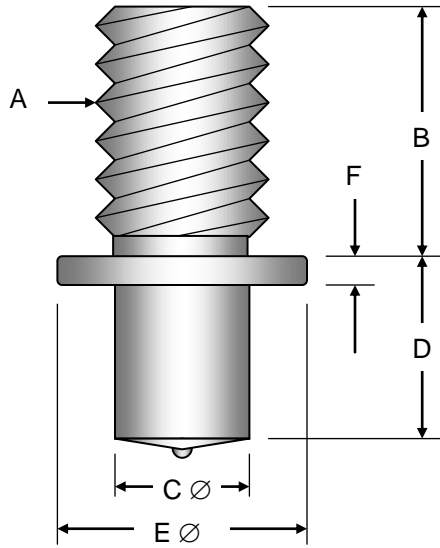
Cutlass Fasteners, Inc.

83 Vermont Ave., Unit 6, Warwick, RI 02888
 Tel: (401) 732-6333 Fax: (401) 732-6336
 cutlass-studwelding.com

Stud Welding...

- Fasteners
- Equipment
- Service

ARC COLLAR STUDS



A (Thread)	C Ø	E Ø	F	FERRULE
1/4-20 UNC	0.215	1/2"	1/8"	CS-08
5/16-18 UNC	0.275	5/8"	1/8"	CS-10
3/8-16 UNC	0.330	5/8"	1/8"	CS-12

Thread Size	Material	Part No. Prefix	B (Thread Length ± 0.015")	"D" Base Length Before Weld (± 0.015")					
				1/2	5/8	3/4	7/8	1.0	1.1/8
1/4-20 UNC	Mild Steel	3601-	1/2				9706		
			5/8						
			3/4	9707	9701			9704	
	Stainless	3602-	1/2						
			5/8						
			3/4		9701				
5/16-18 UNC	Mild Steel	3601-	5/8			9803			
			3/4		9801				
	Stainless	3602-	5/8		9801				
			3/4						
3/8-16 UNC	Mild Steel	3601-	5/8	9901	9902		9919	9903	9904
			3/4				9908		
	Stainless	3602-	5/8				9913	9912	9904
			3/4	9908		9909			

All part numbers refer to length before weld....studs will be approximately 1/8" shorter after weld.
 Part No. example....3/8-16 X 5/8 MS ARC CS .330 X 1.1/8(BW)....3601-9904

Call Cutlass for part numbers not shown.

Non-standard diameters and/or lengths may be available by special order....minimum order quantities may apply.