

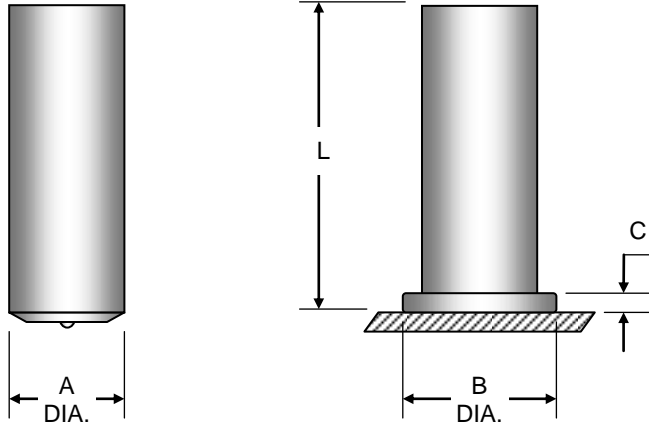
Cutlass Fasteners, Inc.

83 Vermont Ave., Unit 6, Warwick, RI 02888
 Tel: (401) 732-6333 Fax: (401) 732-6336
 cutlass-studwelding.com

Stud Welding...

- Fasteners
- Equipment
- Service

METRIC ARC WELD PINS



BEFORE WELD

AFTER WELD

A Ø	B Ø	C	FERRULE
6MM	9.2	2.8	FB-08
8MM	10.0	2.8	FB-10
10MM	11.2	3.2	FB-M10
12MM	15.3	4.0	FB-M12
16MM	20.3	4.8	FB-20
20MM	24.0	6.4	FB-M20

DIAMETER	MATERIAL	PART NO. PREFIX	"L" LENGTH (AFTER WELD)							
			20	25	30	35	40	50	60	75
6MM	Mild Steel	3241	0620	0625	0630	0635	0640	0650	0660	0675
	Stainless Steel	3242								
8MM	Mild Steel	3241	0820	0825	0830	0835	0840	0850	0860	0875
	Stainless Steel	3242								
10MM	Mild Steel	3241	1020	1025	1030	1035	1040	1050	1060	1075
	Stainless Steel	3242								
12MM	Mild Steel	3241	1220	1225	1230	1235	1240	1250	1260	1275
	Stainless Steel	3242								
16MM	Mild Steel	3241	NA	NA	1630	1635	1640	1650	1660	1675
	Stainless Steel	3242								
20MM	Mild Steel	3241	NA	NA	2030	2035	2040	2050	2060	2075
	Stainless Steel	3242								

All Metric Arc stud descriptions and part numbers refer to the after weld length. Studs will be approximately 3mm longer before weld for studs up to 12mm diameter and approximately 5mm longer for studs 16mm diameter and larger.

Part no. example....10MM Dia. X 25(AW) SS ARC PIN....3242-1025

Non-standard diameters and/or lengths are available by special order....minimum order quantities may apply.