

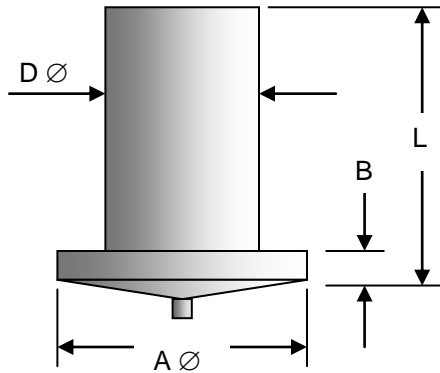
Cutlass Fasteners, Inc.

83 Vermont Ave., Unit 6, Warwick, RI 02888
 Tel: (401) 732-6333 Fax: (401) 732-6336
 cutlass-studwelding.com

Stud Welding...

- Fasteners
- Equipment
- Service

CD FLANGED WELD PINS (No Thread)



D Ø	A Ø	B
1/8	7/32	0.030
3/16	1/4	0.030
0.217	5/16	0.030
1/4	5/16	0.030
5/16	3/8	0.040
3/8	1/2	0.040

Diameter Ø	Material	Part No. Prefix	L (Length ± 0.015")													
			1/4	3/8	1/2	5/8	3/4	7/8	1.0	1.1/4	1.1/2	1.3/4	2.0	2.1/4	2.1/2	3.0
1/8	Mild Steel	2121-														
	Stainless	2122-	0408	0412	0416	0420	0424	0428	0432	0440	0448	0456	0464	0472	0480	0496
	Aluminum	2123-														
3/16	Mild Steel	2121-														
	Stainless	2122-	0608	0612	0616	0620	0624	0628	0632	0640	0648	0656	0664	0672	0680	0696
	Aluminum	2123-														
0.217	Mild Steel	2121-														
	Stainless	2122-	0708	0712	0716	0720	0724	0728	0732	0740	0748	0756	0764	0772	0780	0796
	Aluminum	2123-														
1/4	Mild Steel	2121-														
	Stainless	2122-	0808	0812	0816	0820	0824	0828	0832	0840	0848	0856	0864	0872	0880	0896
	Aluminum	2123-														
5/16	Mild Steel	2121-														
	Stainless	2122-	1008	1012	1016	1020	1024	1028	1032	1040	1048	1056	1064	1072	1080	1096
	Aluminum	2123-														
3/8	Mild Steel	2121-														
	Stainless	2122-	1208	1212	1216	1220	1224	1228	1232	1240	1248	1256	1264	1272	1280	1296
	Aluminum	2123-														

Stock Sizes

Part No. example....3/16 Ø x 1/2" long Stainless Steel....2122-0616

Non-Stocked sizes and Non-Standard diameters and/or lengths are available by special order....minimum order quantities may apply.