

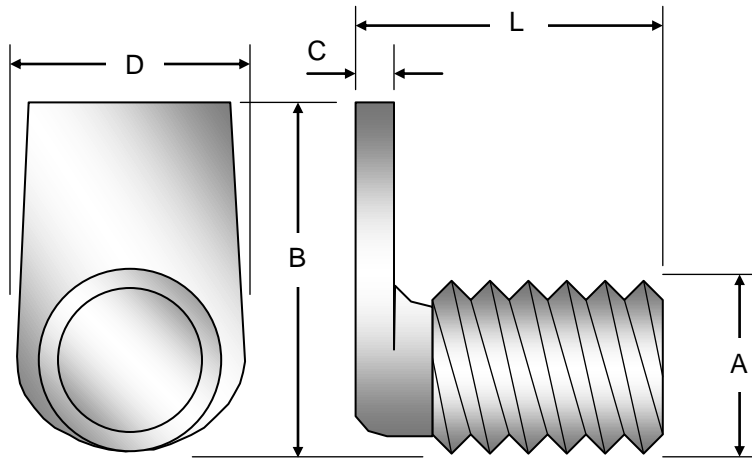
Cutlass Fasteners, Inc.

83 Vermont Ave., Unit 6, Warwick, RI 02888
 Tel: (401) 732-6333 Fax: (401) 732-6336
 cutlass-studwelding.com

Stud Welding...

- Fasteners
- Equipment
- Service

"L" WELD SCREWS



A (Thread)	B	C	D
6-32	0.562	0.047	0.218
8-32	0.625	0.063	0.250
10-32	0.688	0.063	0.312
10-24	0.688	0.063	0.343
1/4-20	0.750	0.094	0.375
5/16-18	0.875	0.125	0.437
3/8-16	1.00	0.156	0.531

Thread Size	Material	Part No. Prefix	L (Length ± 0.015")									
			3/8	1/2	5/8	3/4	7/8	1.0	1.1/4	1.1/2	1.3/4	2.0
6-32 UNC	Mild Steel	2901-	0312	0316	0320	0324	0328	0332	0340	0348		
	Stainless	2902-	0312	0316	0320	0324	0328	0332	0340	0348		
8-32 UNC	Mild Steel	2901-	0412	0416	0420	0424	0428	0432	0440	0448		
	Stainless	2902-	0412	0416	0420	0424	0428	0432	0440	0448		
10-32 UNF	Mild Steel	2911-	0512	0516	0520	0524	0528	0532	0540	0548	0556	0564
	Stainless	2912-	0512	0516	0520	0524	0528	0532	0540	0548	0556	0564
10-24 UNC	Mild Steel	2901-	0512	0516	0520	0524	0528	0532	0540	0548	0556	0564
	Stainless	2902-	0512	0516	0520	0524	0528	0532	0540	0548	0556	0564
1/4-20 UNC	Mild Steel	2901-		0816	0820	0824	0828	0832	0840	0848	0856	0864
	Stainless	2902-		0816	0820	0824	0828	0832	0840	0848	0856	0864
5/16-18 UNC	Mild Steel	2901-			1020	1024		1032	1040	1048		1064
	Stainless	2902-			1020	1024		1032	1040	1048		1064
3/8-16 UNC	Mild Steel	2901-						1232	1240	1248		
	Stainless	2902-						1232	1240	1248		

Part number example....1/4-20 X 1.0 MS L WELD SCREW....2901- 0832

Non-standard diameters and/or lengths are available by special order....minimum order quantities may apply.

email: sales@cutlass-studwelding.com