

Cutlass Fasteners, Inc.

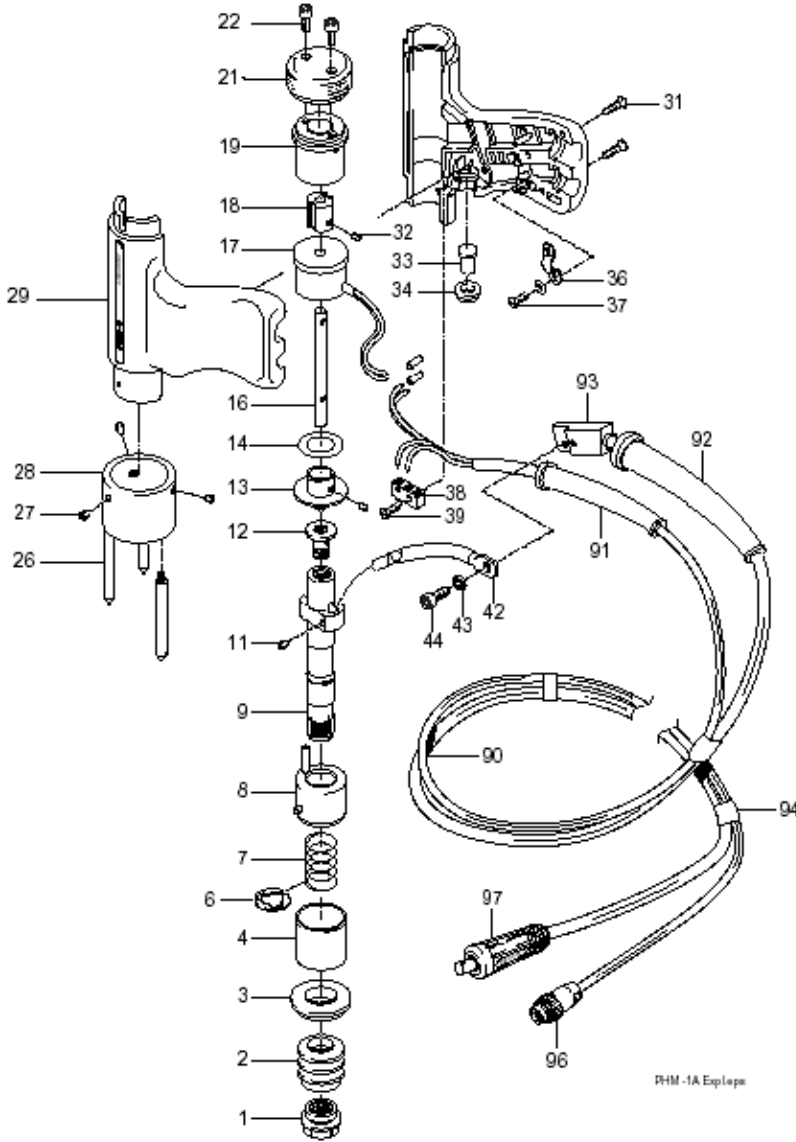
83 Vermont Ave., Unit 6, Warwick, RI 02888
 Tel: (401) 732-6333 Fax: (401) 732-6336
 cutlass-studwelding.com

Stud Welding...

- Fasteners
- Equipment
- Service

PHM-1A PARTS LIST

PHM-1A GUN PARTS



| # | PART NO. | DESCRIPTION | QTY |
|-----|------------|--------------------------|-----|
| | 90-10-2211 | COMPLETE SIGNUS PHM-1A | 1 |
| 1 | 80-40-1738 | TAPER CHUCK ADAPTOR | 1 |
| 2 | 80-40-1097 | BELLOWS | 1 |
| 3 | 80-40-1023 | INSULATING BUSH | 1 |
| 4 | 80-40-1021 | GUIDE BUSH | 1 |
| 6 | 80-40-1023 | LOCK WASHER | 1 |
| 7 | 80-15-1038 | MAIN SPRING | 1 |
| 8 | 80-40-1022 | ANTI ROTATE GUIDE | 1 |
| 9 | 80-40-1011 | SPINDLE PHM-1A | 1 |
| 11 | 80-15-1011 | M3 X 12 SOC. SET SCREW | 1 |
| 12 | 80-40-1033 | LIFT ADAPTOR | 1 |
| 13 | 80-40-1034 | LIFT ASSEMBLY | 1 |
| 14 | 80-40-1035 | BRASS WASHER | 1 |
| 16 | 80-40-1036 | LIFT SHAFT | 1 |
| 17 | 80-30-1010 | LIFT SOLENOID | 1 |
| 18 | 80-40-1037 | SLIDING BLOCK | 1 |
| 19 | 80-40-1025 | LIFT ADJUSTER | 1 |
| 21 | 80-40-1075 | REAR CAP | 1 |
| 22 | 80-15-1030 | M3 X 6 SOC. HD SCREW | 1 |
| 26 | 80-40-1012 | TRIPOD LEG | 3 |
| 27 | 80-15-1010 | M5 X 4 SOC. SET SCREW | 1 |
| 28 | 80-40-1013 | TRIPOD FACEPLATE | 1 |
| 29 | 80-40-1602 | GUN BODY (TOP & BOTTOM) | 1 |
| 33 | 80-40-1016 | TRIGGER BUTTON | 1 |
| 34 | 80-40-1017 | TRIGGER GUIDE | 1 |
| 36 | 80-10-1016 | M4 LOCK WASHER | 1 |
| 37 | 80-15-1061 | M2.5 X 8 MACH. SCREW | 2 |
| 38 | 80-50-1013 | TRIGGER SWITCH | 1 |
| 39 | 80-15-1015 | M2 X 10 MACH. SCREW | 2 |
| 42 | 80-72-1012 | INTERNAL WELD CABLE | 1 |
| 43 | 80-15-1016 | M4 LOCK WASHER | 1 |
| 44 | 80-15-1012 | M4 X 8 SOC. HD SCREW | 1 |
| 90 | 80-72-1022 | WELD/CONTROL CABLE ASSY. | 1 |
| 91 | 80-10-1011 | CONTROL CABLE SLEEVE | 1 |
| 92 | 80-10-1013 | WELD CABLE SLEEVE | 1 |
| 93 | 80-35-1134 | CONTACT BLOCK SET | 1 |
| 94 | 80-10-1012 | CABLE BINDER | 10 |
| 96 | 999-136 | CONTROL PLUG C/M | 1 |
| 97 | 650-669 | DINSE WELD PLUG C/M | 1 |
| 100 | 80-42-0011 | LABEL PHM-1A | 1 |

ALTERNATE PARTS...

| # | PART NO. | DESCRIPTION | QTY |
|-----|------------|--|-----|
| 1A | 80-40-1741 | B COLLET ADAPTOR | 1 |
| 28A | 80-40-1739 | SINGLE LEG FACEPLATE (fitted as standard) | 1 |
| 28B | 80-40-1113 | TWIN LEG FACEPLATE | 1 |