

Cutlass Fasteners, Inc.

83 Vermont Ave., Unit 6, Warwick, RI 02888
 Tel: (401) 732-6333 Fax: (401) 732-6336
 cutlass-studwelding.com

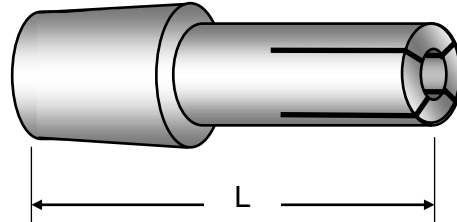
Stud Welding...

- Fasteners
- Equipment
- Service

A-58 WELD GUN ACCESSORIES AND PARTS LIST

STANDARD ACCESSORIES

STANDARD ADJUSTABLE WELD CHUCK



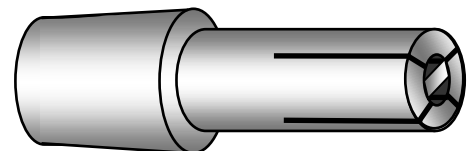
STUD SIZE	STANDARD LENGTH "L"	PART NO.
1/8"	2.1/2"	015-511
10GA, 6-32UNC	2.1/2"	602-451A
8-32UNC	2.1/2"	602-452A
4MM	2.1/2"	602-423A
#10, 3/16"	2.1/2"	605-101A
5MM	2.1/2"	605-102
0.217"	2.1/2"	605-112
6MM	2.1/2"	605-103
1/4"	2.1/2"	605-104A
5/16", 8MM	2.1/2"	605-105A
3/8"	2.1/2"	605-106A
10MM	2.1/2"	605-106
7/16"	2.1/2"	015-529
1/2"	2.1/2"	605-109A

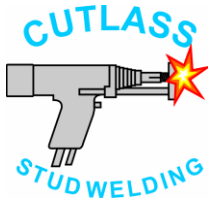
LONG LENGTH "L"	PART NO.
3.7/8"	700-511
3.7/8"	700-451A
3.7/8"	700-452A
3.7/8"	700-423A
3.7/8"	700-101A
3.7/8"	700-102
3.7/8"	700-112
3.7/8"	700-103
3.7/8"	700-104A
3.7/8"	700-105A
3.7/8"	700-106A
3.7/8"	700-106A
3.7/8"	700-529
3.7/8"	700-109A

CHUCKS 4.3/4" LONG ALSO AVAILABLE – USE PART NO. PREFIX 701 eg. 701-451A

RECTANGULAR CHUCKS

1/8 X 1/4	3.0"	003-477
1/8 X 3/8	3.0"	000-183
1/8 X 5/8	3.0"	000-185





Cutlass Fasteners, Inc.

83 Vermont Ave., Unit 6, Warwick, RI 02888
 Tel: (401) 732-6333 Fax: (401) 732-6336
 cutlass-studwelding.com

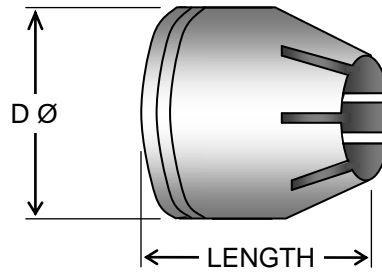
Stud Welding...

- Fasteners
- Equipment
- Service

A-58 WELD GUN ACCESSORIES AND PARTS LIST

STANDARD ACCESSORIES

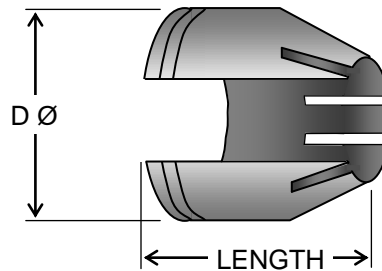
STANDARD ARC SHIELD GRIP



STUD DIAMETER	GRIP SIZE	D	STANDARD LENGTH 1"	LONG LENGTH 2"
			PART NUMBER	PART NUMBER
10GA THRU' 1/2	SMALL	0.875"	003-038	003-041
1/2 THRU' 3/4	MEDIUM	1.150"	003-039	003-042
3/4 THRU' 1.0	LARGE	1.550"	003-040	003-043

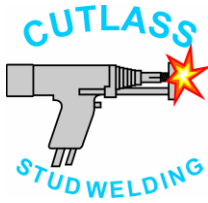
* SPECIFY REQUIRED SIZE WHEN ORDERING

SPLIT (OPEN) ARC SHIELD GRIP



STUD DIAMETER	GRIP SIZE	D	STANDARD LENGTH 1"	LONG LENGTH 2"
			PART NUMBER	PART NUMBER
10GA THRU' 1/2	SAMLL	0.875"	003-038S	003-041S
1/2 THRU' 3/4	MEDIUM	1.150"	003-039S	003-042S
3/4 THRU' 1.0	LARGE	1.550"	003-040S	003-043S

* SPECIFY REQUIRED SIZE WHEN ORDERING



Cutlass Fasteners, Inc.

83 Vermont Ave., Unit 6, Warwick, RI 02888
 Tel: (401) 732-6333 Fax: (401) 732-6336
 cutlass-studwelding.com

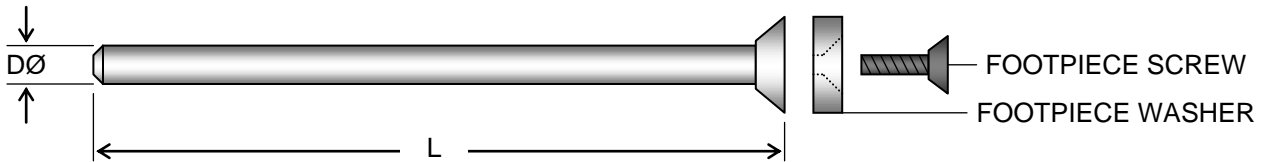
Stud Welding...

- Fasteners
- Equipment
- Service

A-58 WELD GUN ACCESSORIES AND PARTS LIST

STANDARD ACCESSORIES

ADJUSTABLE LEG ASSEMBLY

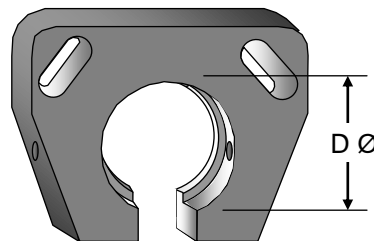


STUD LENGTH	L	D	PART NO.
3/4" TO 5"	7"	3/8"	000-355
5" TO 8"	10"	3/8"	000-358
8" TO 11"	13"	3/8"	000-360

*LONGER LENGTHS AVAILABEL ON REQUEST

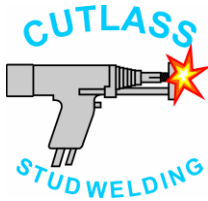
FOOTPIECE WASHER	017-332
FOOTPIECE SCREW	017-775
BRASS FOOTPLATE SCREW	017-776

ARC FOOTPIECE



STUD DIAMETER	SIZE	A	PART NO.	
10GA THRU' 1/2"	SMALL	0.880"	023-249	(003-506)
1/2" THRU' 3/4"	MEDIUM	1.160"	023-250	(003-507)
3/4" THRU' 1"	LARGE	1.750"	023-251	(003-508)

OLD KSM PART NUMBER IS SHOWN IN BRACKETS



Cutlass Fasteners, Inc.

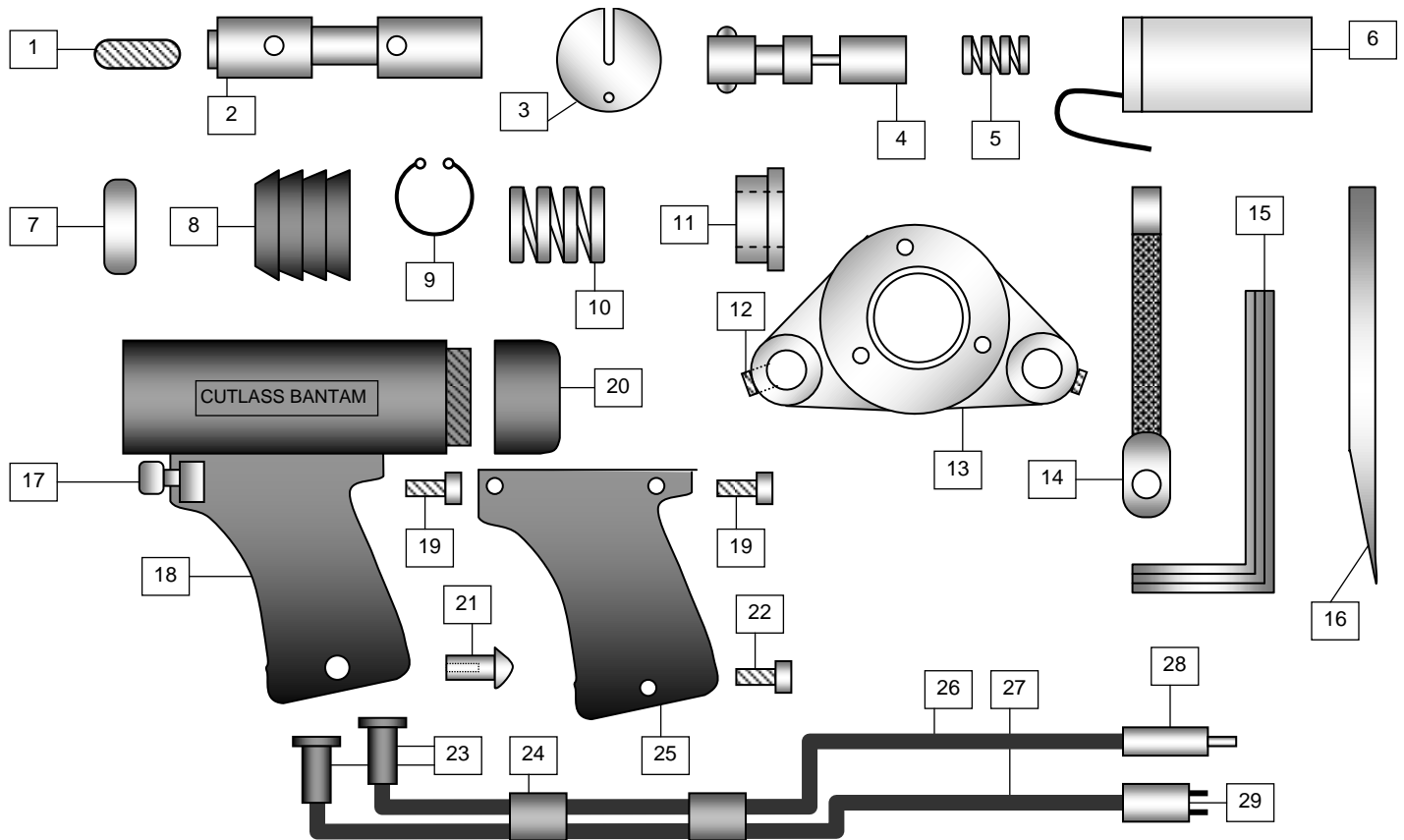
83 Vermont Ave., Unit 6, Warwick, RI 02888
 Tel: (401) 732-6333 Fax: (401) 732-6336
 cutlass-studwelding.com

Stud Welding...

- Fasteners
- Equipment
- Service

A-58 WELD GUN ACCESSORIES AND PARTS LIST

A-58 GUN PARTS



ITEM	DESCRIPTION	PART NO.
1	SPINDLE SCREW	016-405
2	SPINDLE – A58	015-804
3	SPLIT WASHER	001-332
4	LIFTING ASSEMBLY	015-791
5	SOLENOID SPRING	001-337
6	SOLENOID	015-797
7	BELLOWS RETAINER	001-816
8	BELLOWS	003-499
9	CIRCLIP	009-948
10	MAIN SPRING	003-319
11	FACEPLATE BUSH	003-501
12	FACEPLATE SCREW	010-410
13	FACEPLATE	011-513
14	INTERNAL WELD CABLE	602-083
15	5/32 ALLEN KEY	000-373
16	CHUCK DRIFT	000-374

ITEM	DESCRIPTION	PART NO.
17	TRIGGER SWITCH	650-640
18	GUN BODY	016-383
19	10-24 X 1/2 SCREW	000-914
20	BACK CAP	015-803
21	HANDLE POST NUT	002-906
22	10-24 X 3/4 SCREW	000-916
23	CABLE SLEEVE	001-181
24	1" RUBBER SLEEVE	600-627
25	HANDLE COVER	016-384
26	#2 WELD CABLE	602-078
27	CONTROL CABLE	600-717
28	WELD PLUG C/M	000-568
29	CONTROL PLUG C/M	000-594
*2A	SPINDLE ASSEMBLY	015-792

* INCLUDES SPINDLE, CIRCLIPS, SPRING & SCREW