

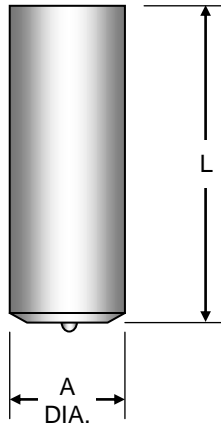
Cutlass Fasteners, Inc.

83 Vermont Ave., Unit 6, Warwick, RI 02888
 Tel: (401) 732-6333 Fax: (401) 732-6336
 cutlass-studwelding.com

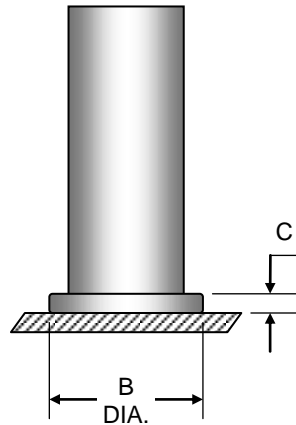
Stud Welding...

- Fasteners
- Equipment
- Service

ARC PINS



BEFORE WELD



AFTER WELD

A Ø	B Ø	C	FERRULE
1/4	23/64	7/64	FB-08
5/16	25/64	7/64	FB-10
3/8	7/16	1/8	FB-12
1/2	19/32	5/32	FB-16
5/8	51/64	3/16	FB-20
3/4	15/16	1/4	FB-24

DIAMETER	MATERIAL	PART NO. PREFIX	"L" LENGTH (BEFORE WELD)							
			3/4	1.0	1.1/4	1.1/2	1.3/4	2.0	2.1/2	3.0
1/4	Mild Steel	3221	0824	0832	0840	0848	0856	0864	0880	0896
	Stainless Steel	3222								
5/16	Mild Steel	3221	1024	1032	1040	1048	1056	1064	1080	1096
	Stainless Steel	3222								
3/8	Mild Steel	3221	1224	1232	1240	1248	1256	1264	1280	1296
	Stainless Steel	3222								
1/2	Mild Steel	3221	1624	1632	1640	1648	1656	1664	1680	1696
	Stainless Steel	3222								
5/8	Mild Steel	3221	NA	NA	2040	2048	2056	2064	2080	2096
	Stainless Steel	3222								
3/4	Mild Steel	3221	NA	NA	2440	2448	2456	2464	2480	2496
	Stainless Steel	3222								

Studs 1/2" diameter and below will be 1/8" shorter after weld.
 Studs 5/8" diameter and larger will be 3/16" shorter after weld.

Part no. example....3/8 Dia. X 1.0 SS ARC PIN....3222-1232

Non-standard diameters and/or lengths are available by special order....minimum order quantities may apply.